

## M SERIES

### MODULAR MIST COLLECTORS

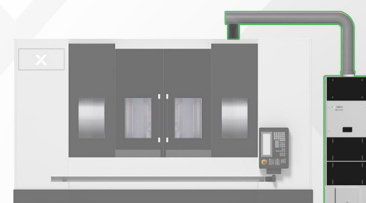


- ❑ MODULAR CONCEPT DESIGN
- ❑ EXTENDED FILTRATION AREA
- ❑ PUSH AND LOCK SEALING TECHNOLOGY | PATENT PENDING |
- ❑ TO ELIMINATE: OILMIST, VAPORS AND SMOKE

M2000.2 | M2000.3 | M4000 | M8000



2024 EN 01 01



Exomist M is complete product series of oilmist collectors for large machine tools or centralized system. It is a modular system based upon M4000 base unit that allows maximum combination of filtration stages and air flow rates.

## A HEPA FILTER BOX

Hepa filter element in E13 efficiency level for up to 99,97% separation at 0,3 micron.

## B MOTOR / FAN MODULE

Motor/fan assembly that allows for several possible combinations in order to reach the desired air flow rate.

## C TOUCH SCREEN

HMI touch screen with instant filter status monitoring and complete machine tool interface.

## D FILTER BOX TWO

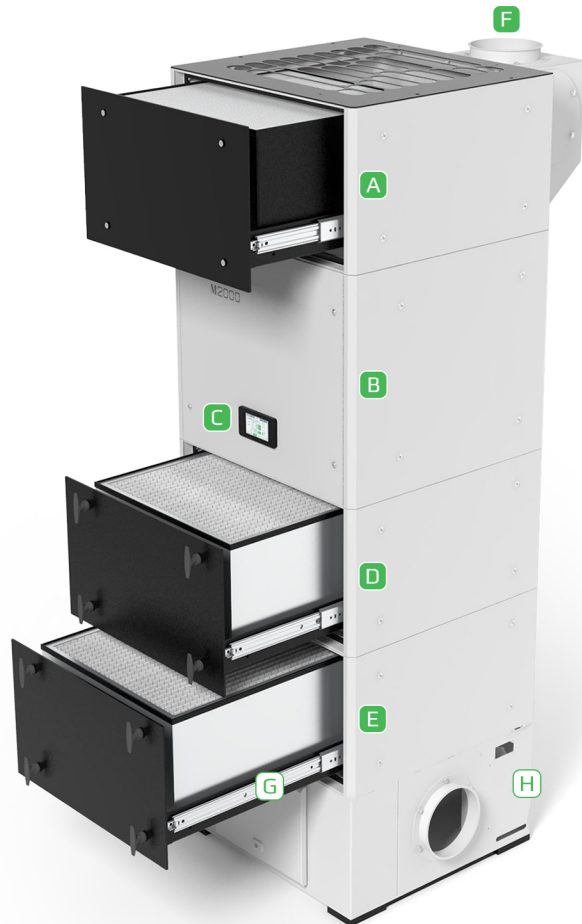
Multilayer filter box for the removal fine oilmist.

## E FILTER BOX ONE

Integrated Metallic washable cell followed by a multi layer filter box. Designed for removal of larger oil particles, grease and dust.

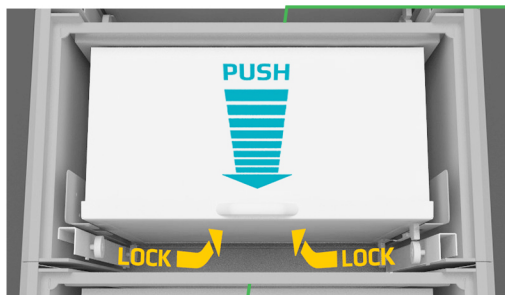
## F OPTIONAL INLET BOX

Possibility for top side inlet connection to the machine tool, to save floor space.



## G PUSH AND LOCK

Innovative system (PATENT PENDING) that allows automatic sealing of the filter with a single move.



PUSH AND LOCK

## H DRAINAGE PUMP

Integrated pump to convey accumulated drained coolant back to the tank of the machine tool. Automatic operation with float level system.

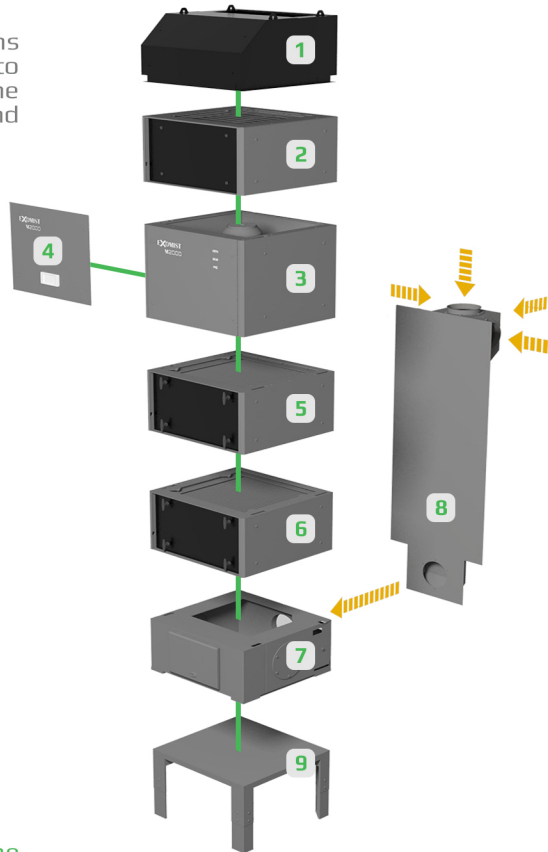
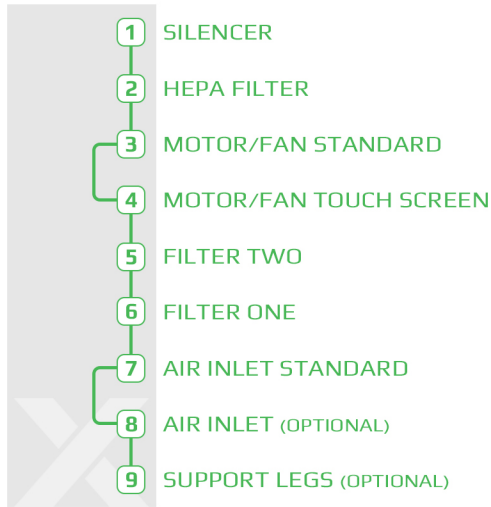


DRAINAGE PUMP

TECHNOLOGY

## MODULARITY DESIGN

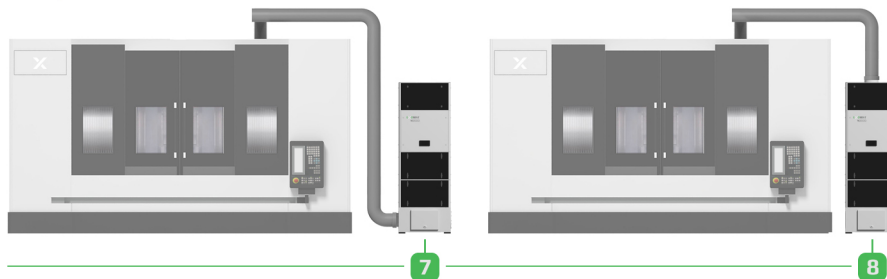
The modularity allows different configurations and combinations to be set up according to the need. From the inlet module to the number of filters stages, extra silencers and motor/fan assembly.



### M SERIES

#### INLET BOX | OPTIONAL |

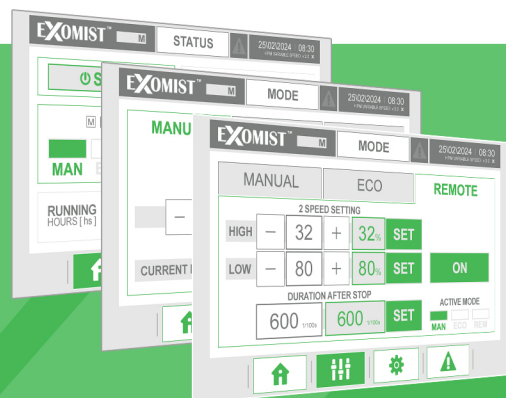
Standard multi inlet on the lower part of the M unit or optional funnel to allow connection from the top.



### M SERIES

#### TOUCH SCREEN

Touch screen for full monitoring of filter status and air flow rate adjustment with a main led alarm indicator easy to visualize.



#### ECO MODE SAVE ENERGY and EXTEND FILTER LIFETIME

Automatic Function that allows to set an ideal air flow rate at installation and keep constant air flow rate throughout the filter lifetime. It can lower electrical consumption by 20 % by taking advantage of the integrated frequency inverter.

## M SERIES PRODUCT LINE



## M SERIES DIMENSIONS AND TECHNICAL DATA

UNITS PAINTED IN RAL 7035/7039  
(SPECIAL COLORS AVAILABLE UPON REQUEST)  
INFORMATION IS SUBJECT TO CHANGE WITHOUT NOTICE

	M2000.2	M2000.3	M4000	M8000
NOMINAL AIR FLOW RATE   (m³/h)	1000-2000	1000-2000	3995	UP TO 8000
STATIC PRESSURE   (Pa)	750	620	2250	2250
MOTOR   (kW)	3.0 400/3/50	3.0 400/3/50	5.5 400/3/50	2.0x5.5 400/3/50
ELECTRICAL CONSUMPTION   (kW)	0,75	1	4.9	2x4.9
WEIGHT   (kg)	350	400	480	980
SOUND LEVEL   (dB)	59	59	67	73
AIR INLETS   (mm)	200	200	300	2x300
FOOTPRINT   (mm)	800 x 800	800 x 800	800 x 800	800 x 1600
MAX HEIGHT   (mm)	1800 - 3000			

