

## HPM SERIES

HIGH PERFORMING MIST COLLECTORS

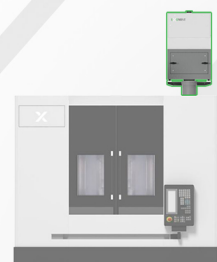


- ❑ MULTI AIR INLETS
- ❑ MACHINE TOOL INTERFACE
- ❑ LOW ELECTRICAL CONSUMPTION
- ❑ THREE STAGES LED FILTER ALARM

HPM **S** | **M** | **L** HPM400 | 700 | 1000 | 1200



2024 US 01 01





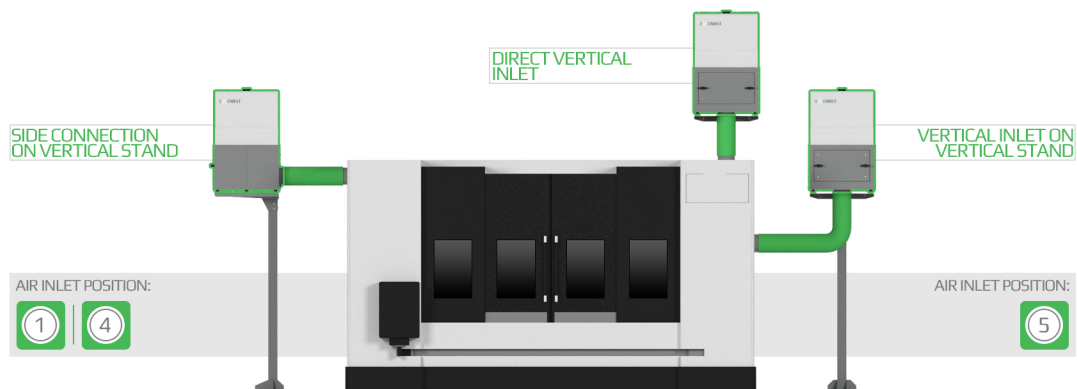
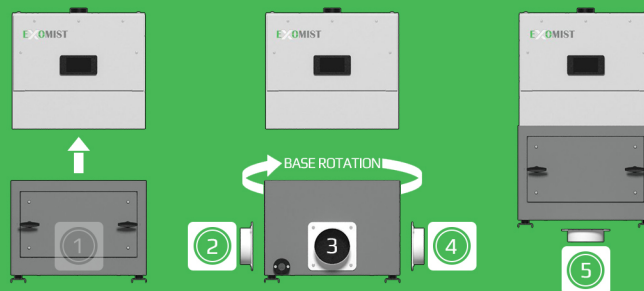
Exomist HPM is a line of high performing mist collectors for machine tools. Specifically designed to handle all kinds of applications. Very simple to install, manage and ready to be interfaced with machine tool/other peripheral equipment.

- (A) REUSABLE FILTER LID
- (B) MAIN FILTER
- (C) CLEAN AIR EXHAUST
- (D) MULTI SIGNAL ALARM
- (E) LED ALARM TO MONITOR EACH FILTER
- (F) MULTISTAGE PREFILTER SECTION
- (G) DETACHABLE SUPPORT BARS (OPTIONAL)
- (H) THREADED DRAIN CONNECTOR
- (I) REMOVABLE AIR INLET CONNECTING PLATE



### UNIVERSAL INSTALLATION

Maximum flexibility for installation. The lower portion of the unit can be rotated on each of its 4 sides. In addition there is convenient vertical direct inlet for direct positioning on the machine tool.

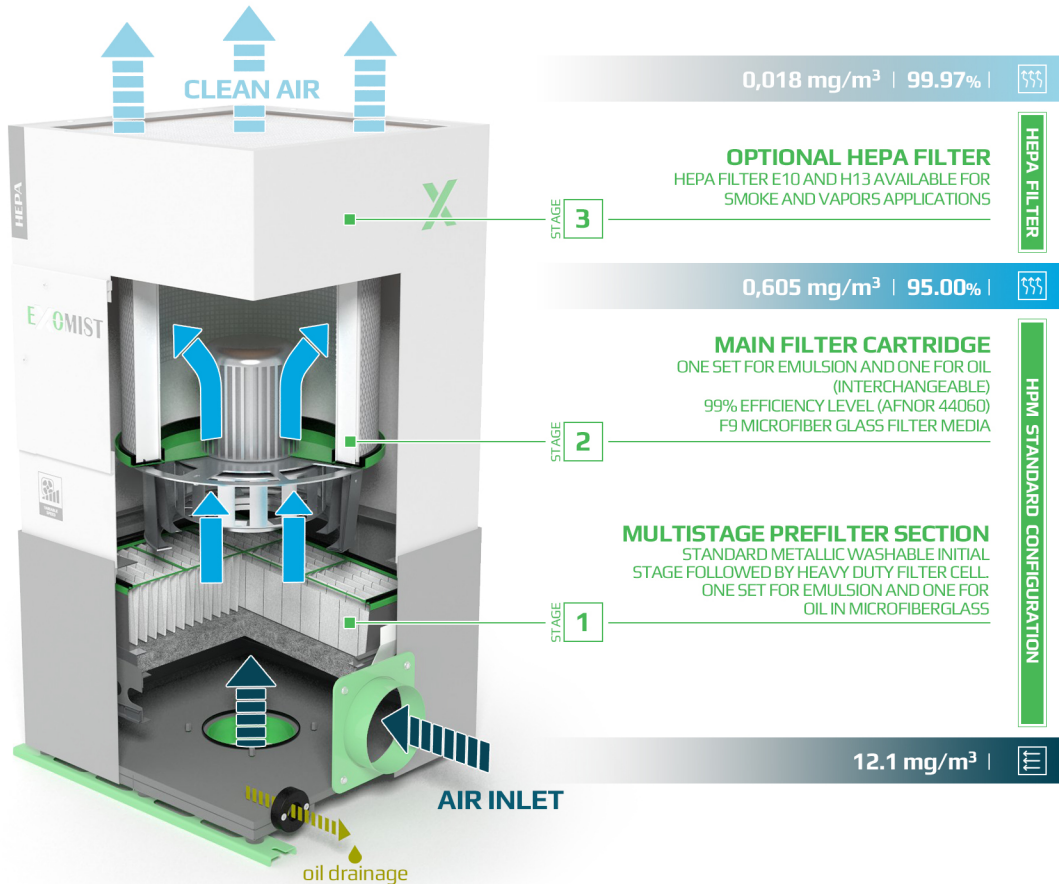


FIELD APPLICATION

## AIR QUALITY

### FILTRATION EFFICIENCY LEVEL RESIDUAL CONCENTRATION

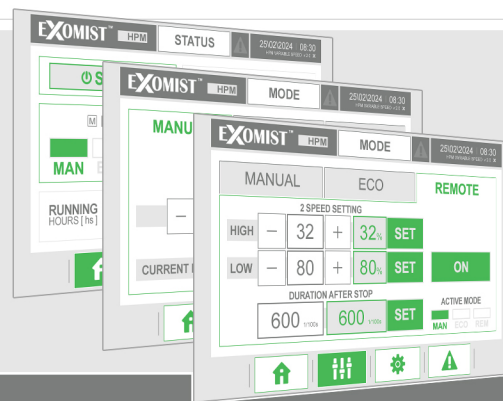
Based upon an installation We have measured following results on a HPM1000 oil configuration installed on a Turning machine tool with high pressure pressure coolant.



### HPM **SIMIL**

#### ADVANCED CONFIGURATION

Full optional configuration with: HEPA filter, HMI screen, EC variable speed motor and machine tool interface. Ideal solution for complex applications with high pressure coolant to optimize electrical consumption and filter lifetime.



INTEGRATED or REMOVABLE touch screen



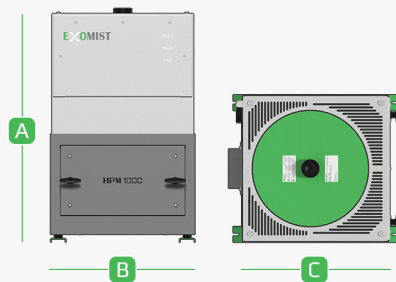
**ECO MODE**  
**SAVE ENERGY and EXTEND FILTER LIFETIME**  
Automatic Function that allows to set an ideal air flow rate at installation and keep constant air flow rate throughout the filter lifetime. It can lower electrical consumption by 20 % by taking advantage of the integrated frequency inverter.

**REMOVABLE TOUCH SCREEN**  
Ideal for controlling HPM once installed on vertical stand and or top of the machine tool.

## HPM PRODUCT LINE



## HPM DIMENSIONS AND TECHNICAL DATA



NOMINAL TECHNICAL DATA  
SPECIAL COLORS AVAILABLE UPON REQUEST  
INFORMATION IS SUBJECT TO CHANGE WITHOUT NOTICE

	HPM 400	HPM 700	HPM 1000	HPM 1200	HPM S	HPM M	HPM L
A	30.8	34.3	37.8	37.8	30.8	34.3	37.8
B	17.6	19.5	23.4	23.4	17.6	19.5	23.4
C	17.6	19.5	23.4	23.4	17.6	19.5	23.4
(INCHES)							
NOMINAL AIR FLOW RATE - 60 Hz   (cfm)	360	630	990	1100	*180- 360	*350- 700	*650- 1200
STATIC PRESSURE   (Pa)	748	1070	1265	1750	650	930	180
SOUND LEVEL   (dB)	66	73	76	78	66	73	76
WEIGHT   (Lbs)	145	176	231	235	145	176	231
MOTOR   (kW)	0,37	0,55	1.10	1.50	** EC 0.3	** EC 0.4	** EC 1.26
MOTOR RATING	IE2	IE2	IE3	IE3	IE4	IE4	IE5
INLET DIAMETER   (iches)	5	6	8	8	5	6	8
RAL	7035 / 7037						

\*MIN - MAX RANGE | \*\*ACTUAL CONSUMPTION

## HPM OPTIONAL AND ACCESSORIES

- ☐ FIRE DAMPER TO AUTOMATICALLY SHUT OFF AIR FLOW IN CASE OF ACCIDENTAL FIRE
- ☐ UNIVERSAL ADJUSTABLE SUPPORT FRAME
- ☐ INSTALLATION ACCESSORIES