

HPM SERIES

HIGH PERFORMING MIST COLLECTORS

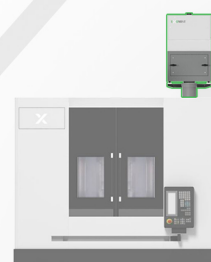


- ❑ MULTI AIR INLETS
- ❑ MACHINE TOOL INTERFACE
- ❑ LOW ELECTRICAL CONSUMPTION
- ❑ THREE STAGES LED FILTER ALARM

HPM **S** | **M** | **L** HPM600 | 1000 | 1500 | 2000



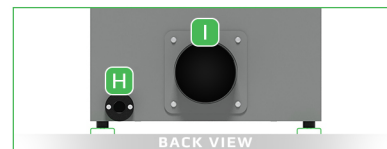
2024 EN 101 01





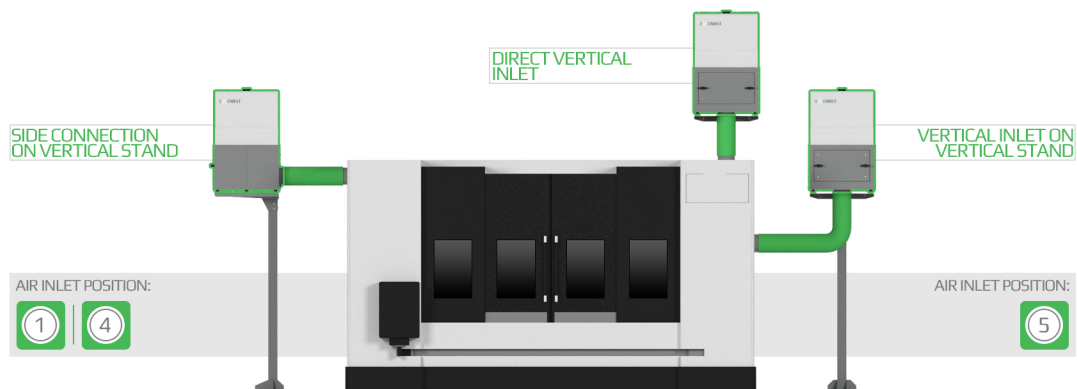
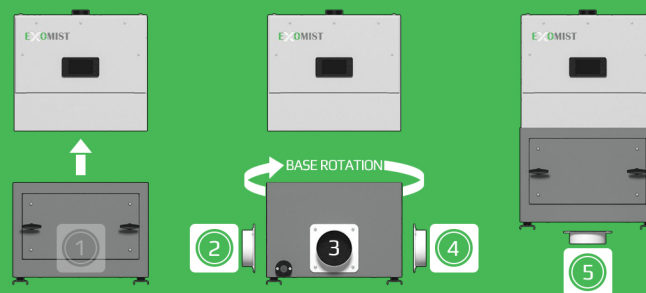
Exomist HPM is a line of high performing mist collectors for machine tools. Specifically designed to handle all kinds of applications. Very simple to install, manage and ready to be interfaced with machine tool/other peripheral equipment.

- (A) REUSABLE FILTER LID
- (B) MAIN FILTER
- (C) CLEAN AIR EXHAUST
- (D) MULTI SIGNAL ALARM
- (E) LED ALARM TO MONITOR EACH FILTER
- (F) MULTISTAGE PREFILTER SECTION
- (G) DETACHABLE SUPPORT BARS (OPTIONAL)
- (H) THREADED DRAIN CONNECTOR
- (I) REMOVABLE AIR INLET CONNECTING PLATE



UNIVERSAL INSTALLATION

Maximum flexibility for installation. The lower portion of the unit can be rotated on each of its 4 sides. In addition there is convenient vertical direct inlet for direct positioning on the machine tool.

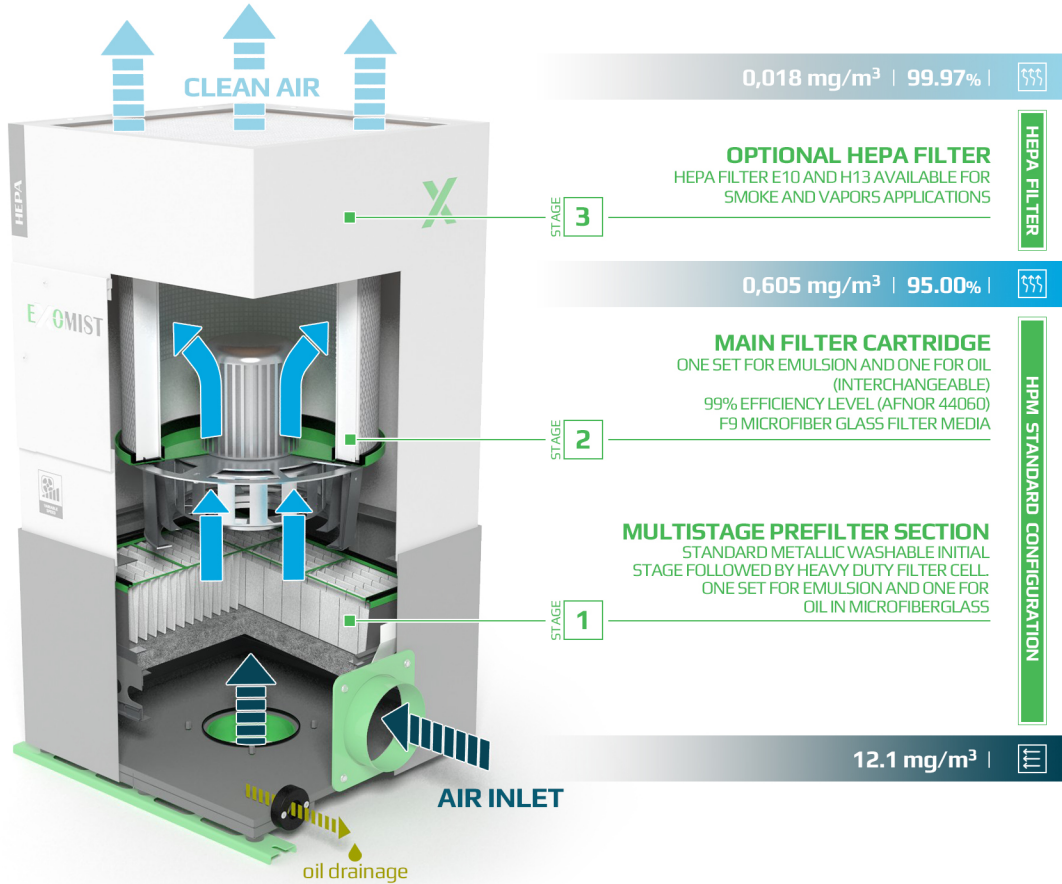


FIELD APPLICATION

AIR QUALITY

FILTRATION EFFICIENCY LEVEL RESIDUAL CONCENTRATION

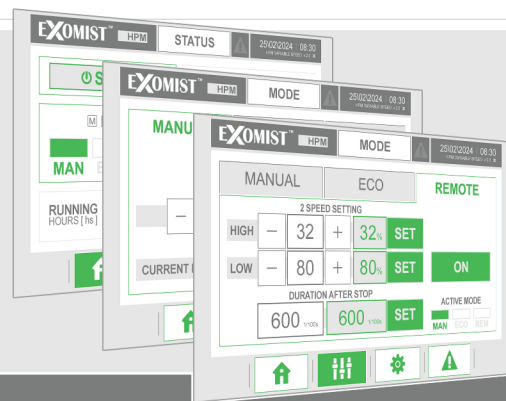
Based upon an installation We have measured following results on a HPM1000 oil configuration installed on a Turning machine tool with high pressure pressure coolant.



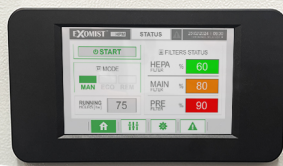
HPM **SIMIL**

ADVANCED CONFIGURATION

Full optional configuration with: HEPA filter, HMI screen, EC variable speed motor and machine tool interface. Ideal solution for complex applications with high pressure coolant to optimize electrical consumption and filter lifetime.



INTEGRATED or REMOVABLE touch screen



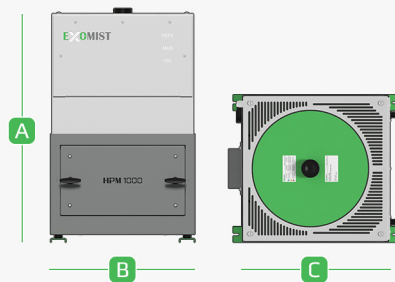
ECO MODE
SAVE ENERGY and EXTEND FILTER LIFETIME
Automatic Function that allows to set an ideal air flow rate at installation and keep constant air flow rate throughout the filter lifetime. It can lower electrical consumption by 20 % by taking advantage of the integrated frequency inverter.

REMOVABLE TOUCH SCREEN
Ideal for controlling HPM once installed on vertical stand and or top of the machine tool.

HPM PRODUCT LINE



HPM DIMENSIONS AND TECHNICAL DATA



NOMINAL TECHNICAL DATA
SPECIAL COLORS AVAILABLE UPON REQUEST
INFORMATION IS SUBJECT TO CHANGE WITHOUT NOTICE

	HPM 600	HPM 1000	HPM 1500	HPM 2000	HPM S	HPM M	HPM L
A	820	890	990	990	1045	1115	1215
B	440	550	620	620	440	550	620
C	440	550	620	620	440	550	620
(mm)							
NOMINAL AIR FLOW RATE (m³/h)	550	890	1450	1870	*300-490	*500-973	*1000-1980
STATIC PRESSURE (Pa)	650	930	1100	1700	650	930	1800
SOUND LEVEL (dB)	65	72	75	77	58	61	66
WEIGHT (Kg)	66	80	105	107	76	94	121
MOTOR (kW)	0,37	0,55	1,10	1,50	** 0,30	** 0,40	** 1,26
MOTOR RATING	IE2	IE2	IE3	IE3	IE5	IE5	IE5
MOTOR VOLTAGE (V)	400 / 3 / 50				EC TYPE 200-270 / 1 / 50		
INLET DIAMETER (mm)	125	150	200	200	125	150	200
RAL	7035 / 7037						

*MIN - MAX RANGE | **ACTUAL CONSUMPTION

HPM OPTIONAL AND ACCESSORIES

- ☐ FIRE DAMPER TO AUTOMATICALLY SHUT OFF AIR FLOW IN CASE OF ACCIDENTAL FIRE
- ☐ UNIVERSAL ADJUSTABLE SUPPORT FRAME
- ☐ INSTALLATION ACCESSORIES